



Prime's Clippings

Prime Landscape Services, Inc.

Volume 2011, Issue 6

www.PrimeLandscapeServices.com

817.461.4000 office

817.274.5459 fax



Summer Is Upon Us

Summer officially begins June 21st, but we are starting June with typical summer weather, highs in the nineties and no rain in the immediate forecast. A few good soakers came through in May but statewide we are still running a deficit. (Rain deficit, that is. Those morons in Austin are always running a budget deficit). The wind has really been gusty and that tends to dry plants out

quickly. Keep an eye on newly planted flowers and shrubs for signs of wilting. Summary: it's time to start watering but use it wisely. With lake levels low we could see rationing before summer's end.

Crapes, vitex, oleanders, and hot weather flowers are starting to bloom, it hasn't hit the century mark yet, and at least there's been a dependable breeze. Get out and enjoy the start of summer!



Hot Weather Lawn Problems

We have already had a hotter and dryer spring than usual, and those are optimum conditions for chinch bugs. The damage from this pest can occur rapidly. Chinch bugs are often the cause of large dry looking areas in sunny St. Augustine lawns. Most of the time people just think they have a clogged sprinkler head or aren't watering enough. If you notice a possible infestation call us immediately! Most of our lawn application programs are only set up for every 5-6 weeks, and if chinch bugs start feeding a week or two after we have been on your property there could be serious damage before we are out for the next regular application. Finding chinch bugs in your lawn is tricky. One way is to just brush the grass aside and look for ¼ inch long black beetles with white wings running through the stems, especially along the area where the dead grass meets green grass. You can also remove both ends of a coffee can, hammer it a few inches into the soil, and fill it halfway with water. The beetles will float to the surface. This has been recommended for years, but is very hit or miss. The best thing to do is call us if you notice any dry patches, especially in St Augustine.



on root systems in the soil, and usually by the time you see the grass turning brown the damage has already been done.

The primary grub worm that we encounter in our area is the white larvae of June Beetles, although there are over 100 species of grub worms in Texas. The best time to apply chemical control for grubs in our area is around the end of July and on through August.

Gray leaf spot is a fungal disease that primarily affects St. Augustine in warm humid weather. The result is

mottled yellow areas that are most noticeable after fertilizing. The fertilizer will green up unaffected areas making the infected areas paler in comparison. Severe cases should be treated with fungicide.

There is still evidence of Take All Patch in many St. Augustine and some Bermuda lawns. Peat moss is the most effective product for control. Also known as Take All Root Rot, this disease shows up as weak stunted patches in spring that partially rebound in early summer only to die out in the heat due to a lack of roots.

The grub worm is another pest that some lawns will suffer damage from. It is much more difficult to determine whether or not you will have a problem with grubs because they feed



It is I, Hernando the chinch bug! I'm back from winter vacation and coming over to your place for dinner.

Our goal is to fulfill the needs of the customer by providing timely, quality services and products.

Thanks for your business!

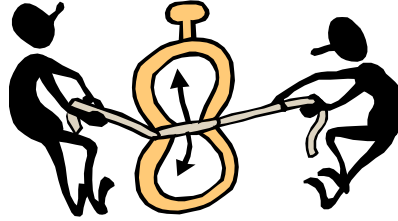
June Chores:

- Mow weekly and do not bag clippings
- Hand water newly planted areas & trees
- Watch for powdery mildew on roses & crapes
- Watch for leaf spot on lawns, hawthorns, and photinias
- Mulch beds
- Aerate lawns

Trash Disposal and Other Extra Chores

Perhaps it has been due to the windy conditions this year, but it seems we have had lots of broken limbs and other debris to clean up on our properties. Often, a customer will ask our mowing crew to haul off a broken limb or some other trash when they are there to service the lawn. We will be happy to accommodate you, but **please call our office in advance to arrange for brush or trash disposal**. Our mowing crews have very limited room on their trailers, usually only room enough for the equipment they are using that day, and cannot haul trash efficiently. Their mowers have designated spots on the trailers with wheel blocks to keep them from rolling and becoming damaged, and we cannot set trash on top of them or behind them. A crew may service 20-30 properties a day and simply cannot move trash around at each stop to get to their equipment. If we were to take just 1 bag of trash from each yard we could accumulate 20 or more bags in a day.

Our shrub trimming crews normally take an empty trailer each day



just for the purpose of debris removal, and we also have Gabriel available most days to run by and pick small piles.

We do charge a modest amount for the gas, labor, and disposal of trash. Not only has our cost of fuel gone up, the landfill fees and dumpster rates have increased this year as well. Our minimum price for hauling off a small amount of debris starts at \$25.00, a 16 ft full trailer load is \$150.00, and a 20 ft flatbed trailer load is \$200.00

Another item we would ask your help on is scheduling extra jobs such as trimming limbs or shrubs, cleaning out beds, mowing the lot next door, or anything that isn't part of your regular services. **Please call our office to schedule "extras"**. Our mowing crews have a tight schedule and spending an extra 10 minutes at 3 or 4 yards a day means their list won't be finished and someone won't get mowed on their regular day.

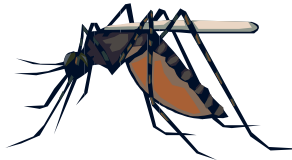
As long as we have some advance notice we will find a way to take care of whatever you need in a timely manner.

Core Aeration—Your Lawn Will Thank You

Aeration is one of the most beneficial turf management practices, and this is one of the best times of the year to aerate your lawn. Core aeration pulls little plugs of soil out of the ground, loosening compacted soil and allowing water to percolate deeper into the soil. This also increases air in the soil and root growth, giving your lawn the tools it needs to thrive in the long hot summer ahead. Aeration is beneficial almost any time of the year, but improving your yard's ability to absorb water before the hottest part of summer is particularly helpful. Prices start at just \$95.00, so give us a call to schedule. Let us help you with all of your outdoor chores so you can spend your leisure time enjoying summer by the pool.

Mosquito Season is Here!

Last year we tested a mosquito product at my own residence along with a few of our customers. Having kids and pets myself I researched many products and it was important to me to find an effective solution with minimal toxicity. I was also concerned after seeing the many mosquito products on the market with finding one that was reasonably priced. What we are using is one of the least toxic insecticides on the market, yet it also has a 3 month residual. This means that you can spray once a month in the mosquito season and keep



my own residence along with a few of our customers. Having many products and it was important to me to find an effective solution with minimal toxicity. I was also concerned after seeing the many mosquito products on the market with finding one that was reasonably priced. What we are using is one of the least toxic insecticides on the market, yet it also has a 3 month residual. This means that you can spray once a month in the mosquito season and keep

On my personal yard we would go outside and basically as the sun set be driven back into the house by the mosquitoes. It pretty well made my backyard unusable after the sun set. After the first spray there was a noticeable difference and then

after the second we would see one or two mosquitoes all night if any at all. Just remember to follow common sense guidelines and check your property for any standing water in gutters, drains, or buckets.



That's one Texas sized mosquito!

NTWGS 2011 Tour of Ponds

The 2011 Annual Tour of Ponds is scheduled for the weekend of June 11 and 12. Each year around 50 proud homeowners throughout the Ft. Worth and Dallas area open their yards to the public. There may be ponds the size of a spa to the size of an

Olympic swimming pool. You will see unique gardens and may come away with some great new ideas for your yard. Pond Tour guides are available at Whiz Q Stone company on SE Loop 820 at the Wilbarger exit.

Don't Forget Our Convenient On-line Bill Pay!

To any of our customers who are looking for a more convenient way to pay their bill, we now offer on-line bill pay service. All you have to do is receive your invoice by email and then click on the

handy link to go to the bill pay center. *Its safe and secure!*

www.primelandscapeservices.com.

